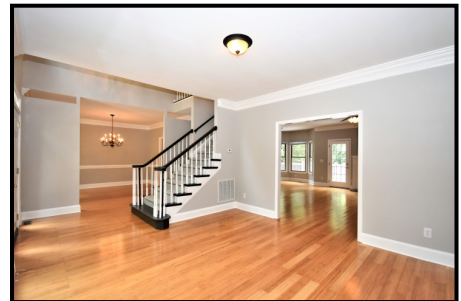


8428 Silver Maple Lane



5 BD/3.5 BA + Formals, Fenced Yard & Two Bonus Rooms!

Beautifully updated home from top to bottom, including new windows, fresh paint in every room, all new appliances, fixtures & carpeting, and a new roof in 2016! This home even boasts two Bonus Rooms, including a large, open third floor with private staircase, dormers, window seats and walk-in attic spaces!

Jack & Jill Bath! Gas Stove! Nine Foot Ceilings! Gleaming Hardwoods! Side Entry Garage with elevated storage area! Multiple Attics! Spacious bedrooms with double door closets and walk-in closets! Neutral colors throughout & ready to move into! Nestled on a large, corner lot in a quiet cul-de-sac in the desirable Ashe Plantation neighborhood of Mint Hill, set minutes away from great shops & restaurants & I-485 access!

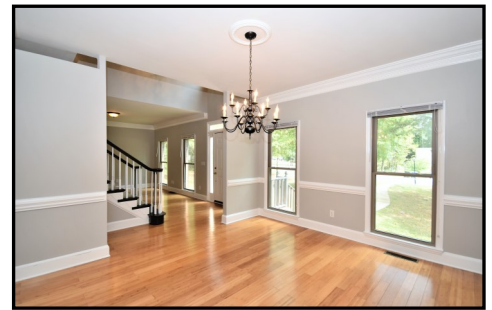
Piatt  Realty

6000 FAIRVIEW ROAD, STE 1200
CHARLOTTE, NC 28210



**CONTACT: DEAN W. PIATT,
GRI/REALTOR
704-534-2304**

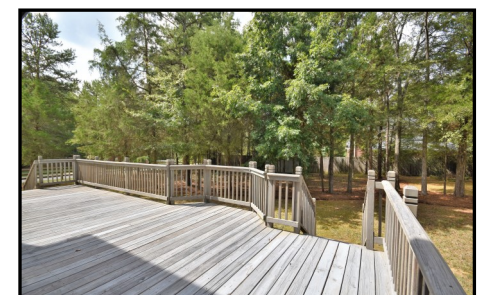
PIATTREALTY@AOL.COM



Gorgeous first impression with hardwoods flowing from the two-story Foyer with curved handrail staircase to the formal Living & Dining Rooms with heavy moldings!



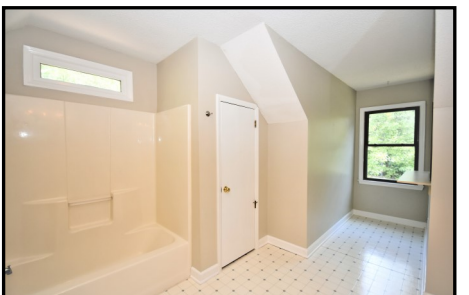
Kitchen with Pantry, all new SS appliances, including gas stove & bayed Breakfast Area!



Open Family Room with gas fireplace, lighted fan, moldings & door to expansive Deck!



First floor Master Suite with hardwoods, walk-in closet, remote control lighted fan and updated bath with wide granity vanity, garden tub and frameless tile shower surround!



Huge Jack & Jill Bath! Second floor Bonus Room has lighted fans and three attic spaces plus stairs to a Third floor Bonus Room with window seat, four attic areas & separate A/C!

Special Features

- **3,663 square feet** on oversized **corner lot** with **fenced yard!**
- Stately curb appeal with **brick front, dentil moldings, window accents, transoms and dormers!**
- **Updated throughout and Move-in Ready!**
- **Large, level and fenced yard** with shaded natural areas and **long Deck** for entertaining!
- **Nine foot ceilings!**
- **First floor Master Suite** with updated Bath, including **granite vanity** and **frameless shower!**
- **All new windows and roof in 2016!**
- **Five large Bedrooms**, with double door or walk-in closets!
- Oversized **Jack & Jill Bath** with lots of storage space, wide vanity and a mirrored makeup/dressing niche with window!
- **Second floor Bonus Room** with dormer windows, two **lighted ceiling fans** and **three attic spaces!**
- Staircase to **Third floor Bonus Room** featuring **four attic spaces**, elongated **window seat**, separate A/C unit, two **dormer window niches** and **recessed lighting!**
- Tremendous storage throughout the home including an **elevated garage storage** area, large closets and **multiple attic storage areas!**
- Minutes to downtown Mint Hill shops and restaurants and quick access to I-485!